

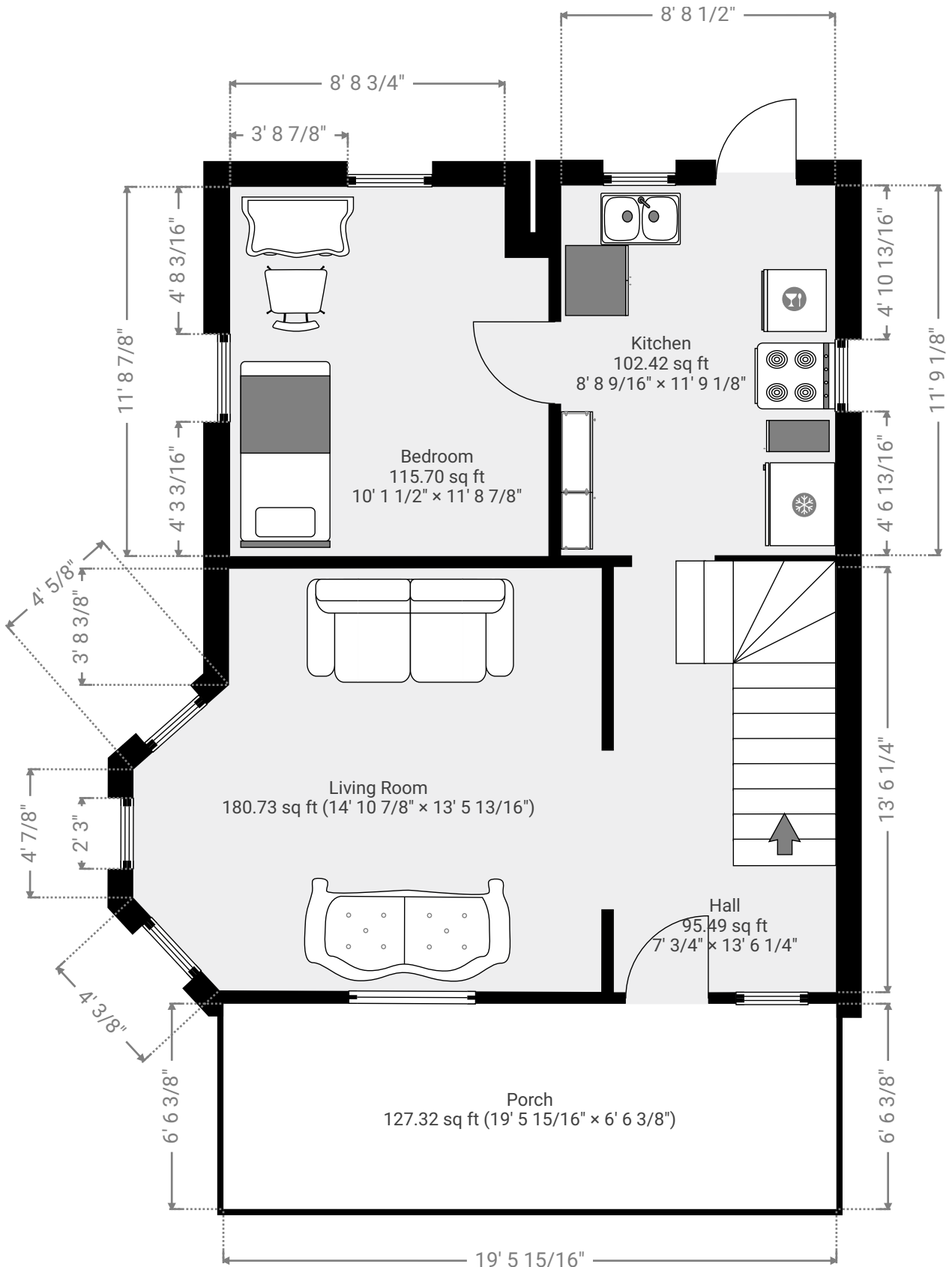
1211

CREATED ON
2022-12-26

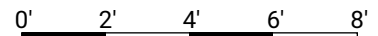
Total area 1659.94 sq ft	Floors 3	Rooms 6	Bathroom 1
------------------------------------	--------------------	-------------------	----------------------

▼ 1st Floor

TOTAL AREA: 592.97 sq ft • LIVING AREA: 592.97 sq ft • ROOMS: 3



THIS FLOORPLAN IS PROVIDED WITHOUT WARRANTY OF ANY KIND. SENSOPIA DISCLAIMS ANY WARRANTY INCLUDING, WITHOUT LIMITATION, SATISFACTORY QUALITY OR ACCURACY OF DIMENSIONS.



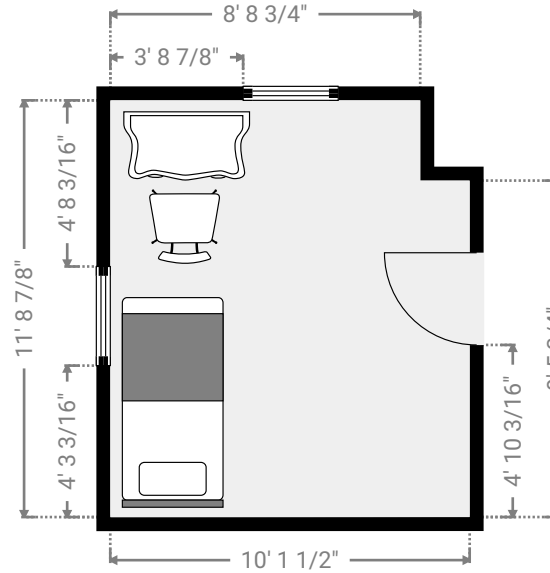
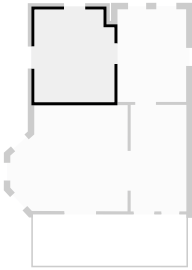
1211

TOTAL AREA: 1659.94 sq ft • LIVING AREA: 1659.94 sq ft • FLOORS: 3 • ROOMS: 6



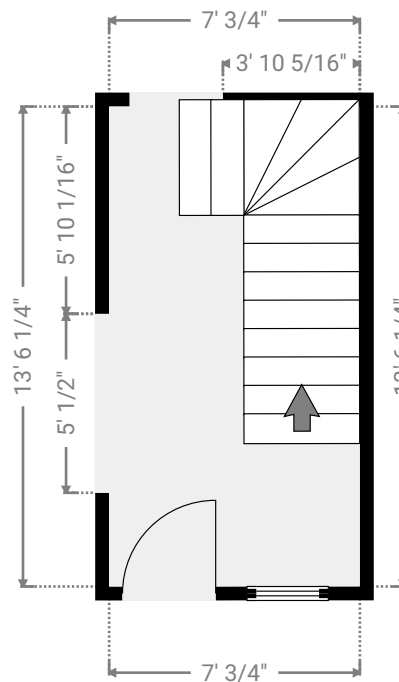
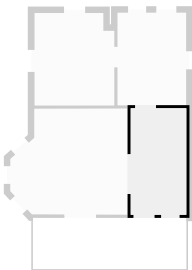
▼ Bedroom
1st Floor

WIDTH: 10' 1 1/2" • LENGTH: 11' 8 7/8"
AREA: 115.70 sq ft • PERIMETER: 43' 8 3/4"



▼ Hall
1st Floor

WIDTH: 7' 3/4" • LENGTH: 13' 6 1/4"
AREA: 95.49 sq ft • PERIMETER: 41' 2"



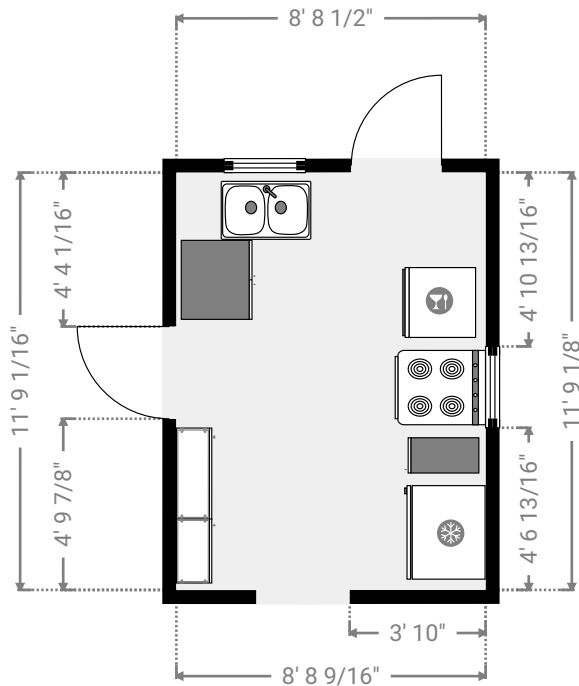
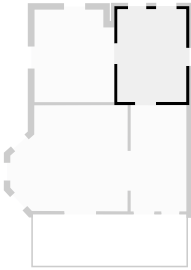
THIS FLOORPLAN IS PROVIDED WITHOUT WARRANTY OF ANY KIND. SENSOPIA DISCLAIMS ANY WARRANTY INCLUDING, WITHOUT LIMITATION, SATISFACTORY QUALITY OR ACCURACY OF DIMENSIONS.



1:65

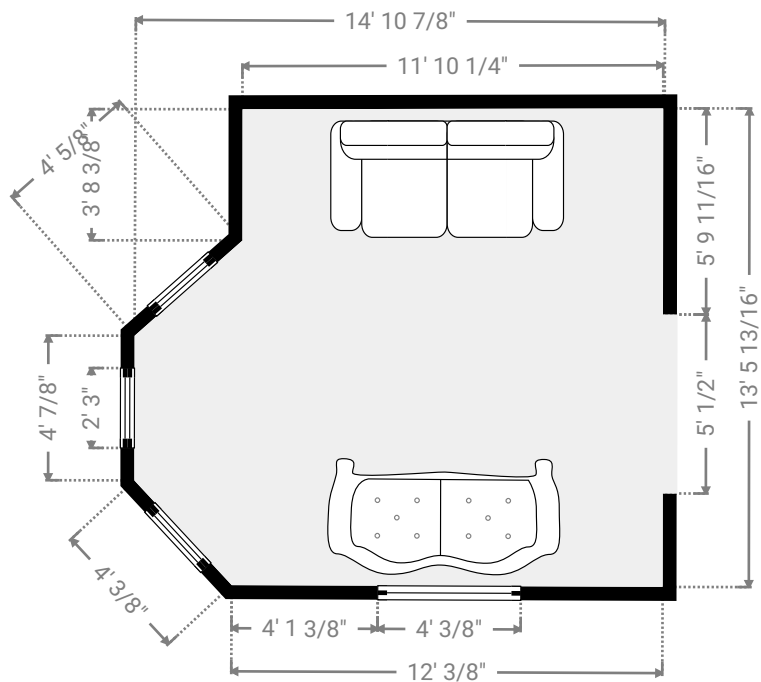
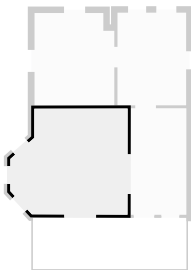
▼ Kitchen
1st Floor

WIDTH: 8' 8 9/16" • LENGTH: 11' 9 1/8"
AREA: 102.42 sq ft • PERIMETER: 40' 11 1/4"



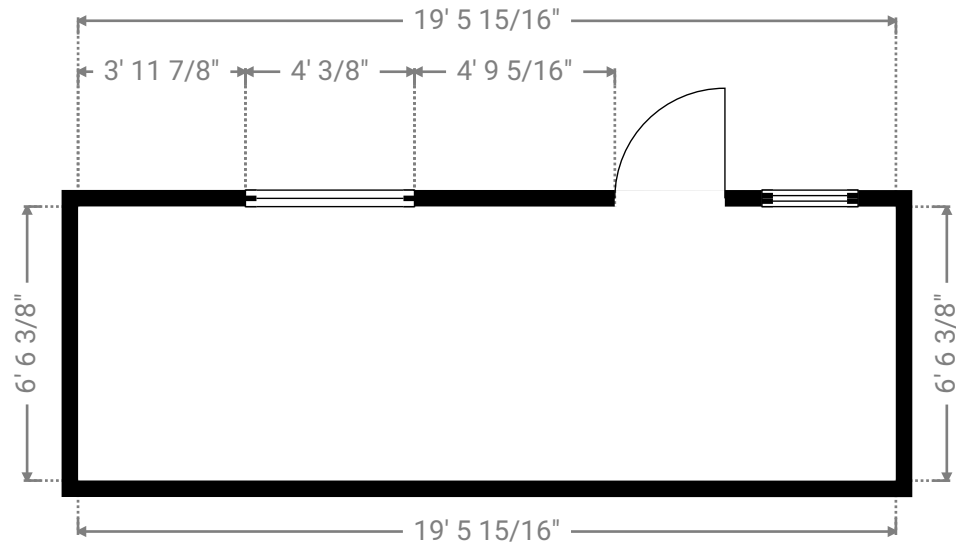
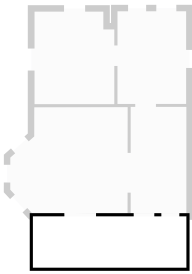
▼ Living Room
1st Floor

WIDTH: 14' 10 7/8" • LENGTH: 13' 5 13/16"
AREA: 180.73 sq ft • PERIMETER: 53' 4"



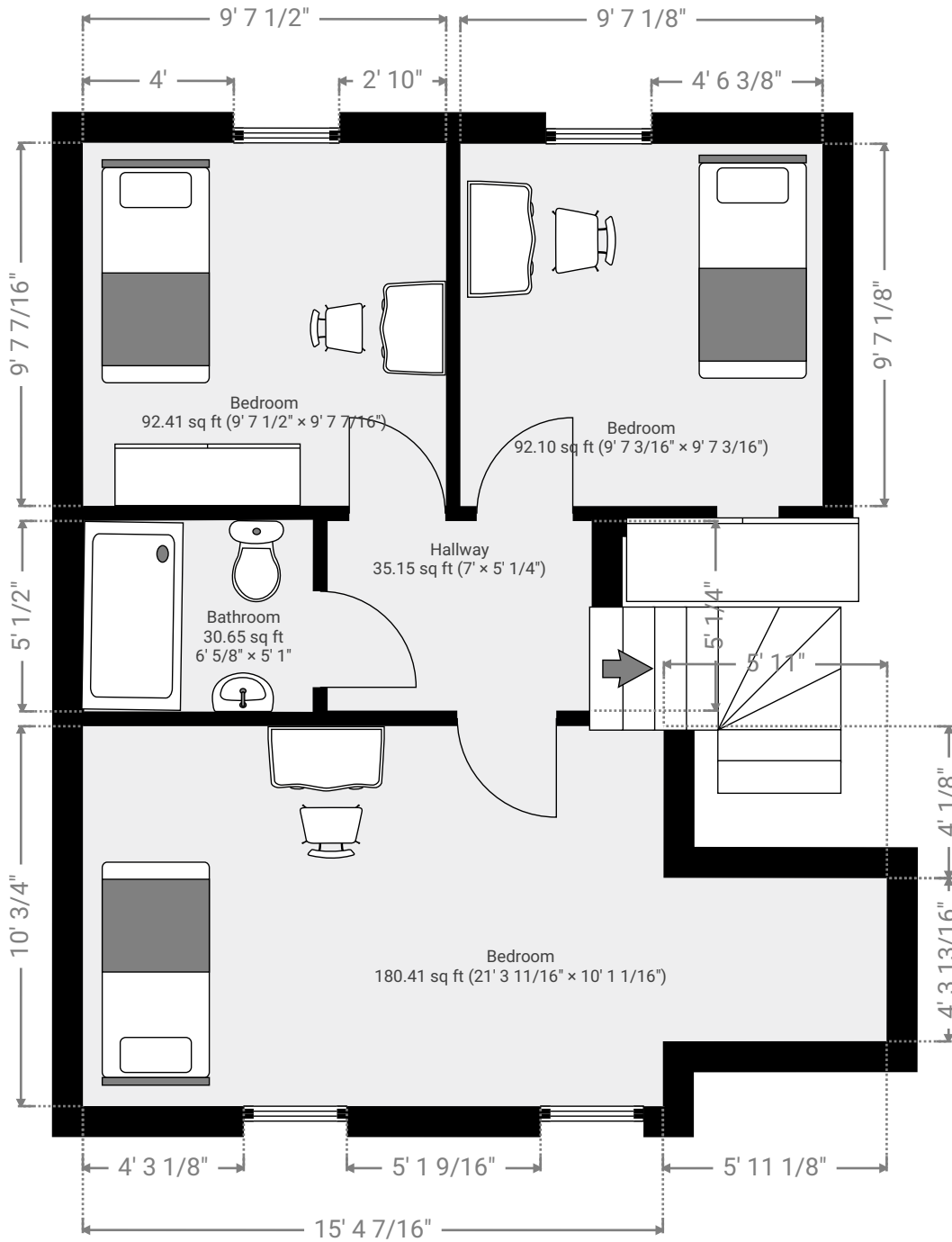
▼ Porch
1st Floor

WIDTH: 19' 5 15/16" • LENGTH: 6' 6 3/8"
AREA: 127.32 sq ft • PERIMETER: 52' 5/8"



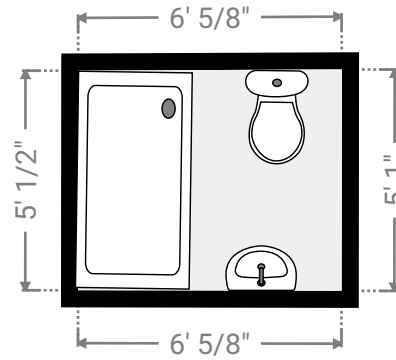
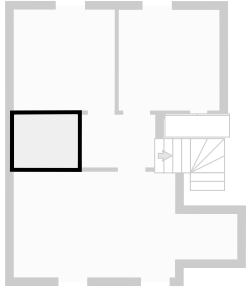
▼ 2nd Floor

TOTAL AREA: 536.29 sq ft • LIVING AREA: 536.29 sq ft • ROOMS: 3



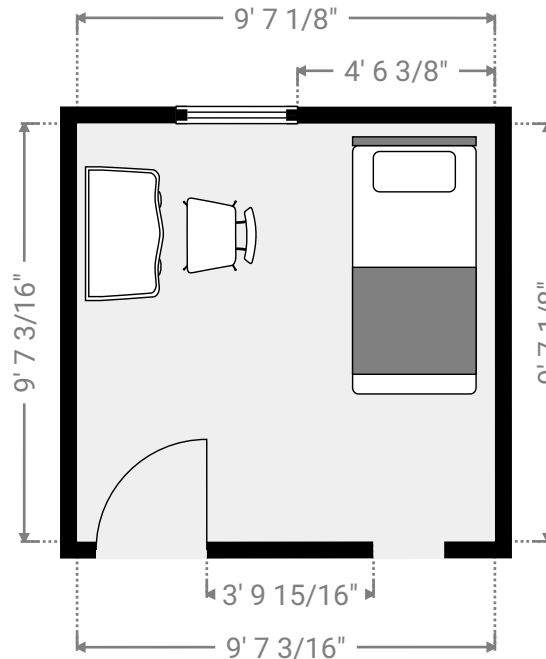
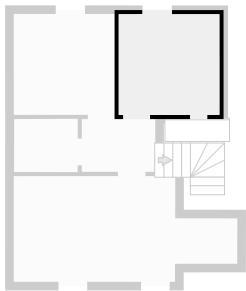
▼ Bathroom
2nd Floor

WIDTH: 6' 5/8" • LENGTH: 5' 1"
AREA: 30.65 sq ft • PERIMETER: 22' 2 13/16"



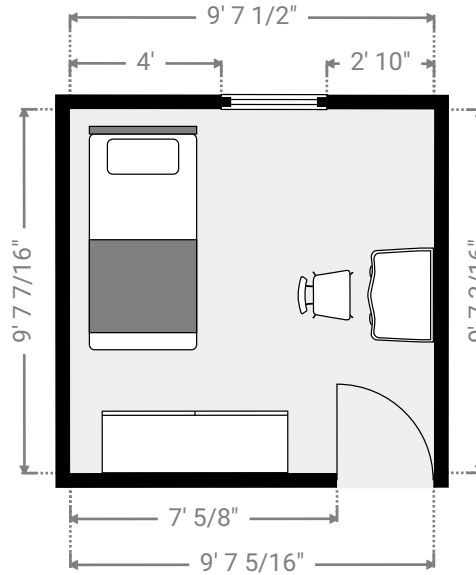
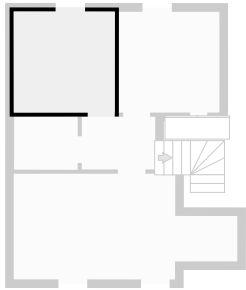
▼ Bedroom
2nd Floor

WIDTH: 9' 7 3/16" • LENGTH: 9' 7 3/16"
AREA: 92.10 sq ft • PERIMETER: 38' 4 5/8"



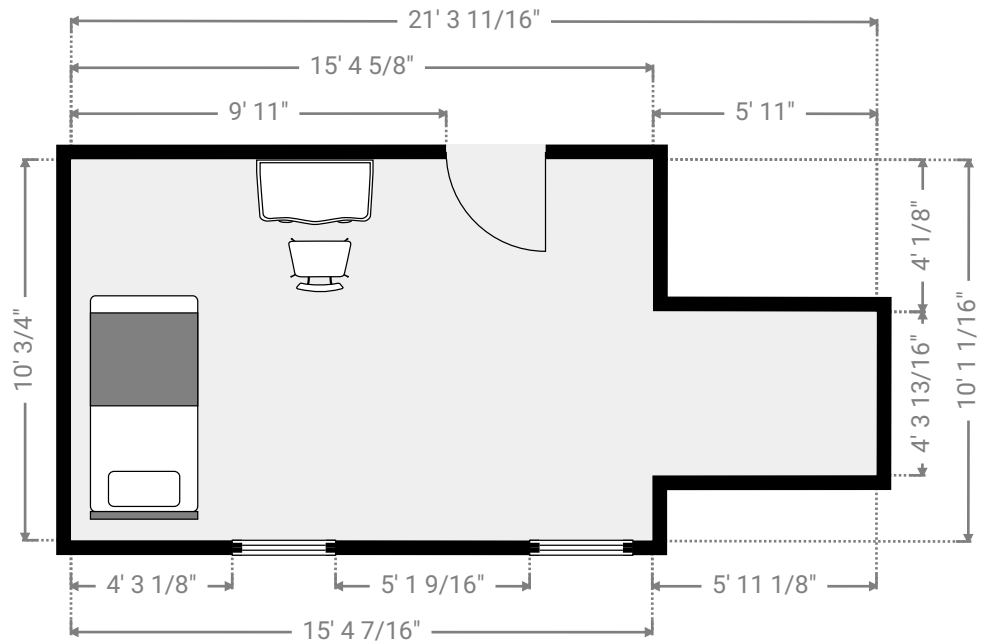
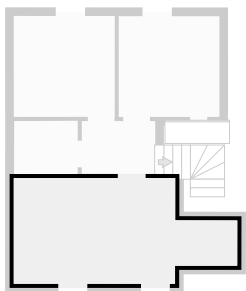
▼ **Bedroom**
2nd Floor

WIDTH: 9' 7 1/2" • LENGTH: 9' 7 7/16"
AREA: 92.41 sq ft • PERIMETER: 38' 5 7/16"



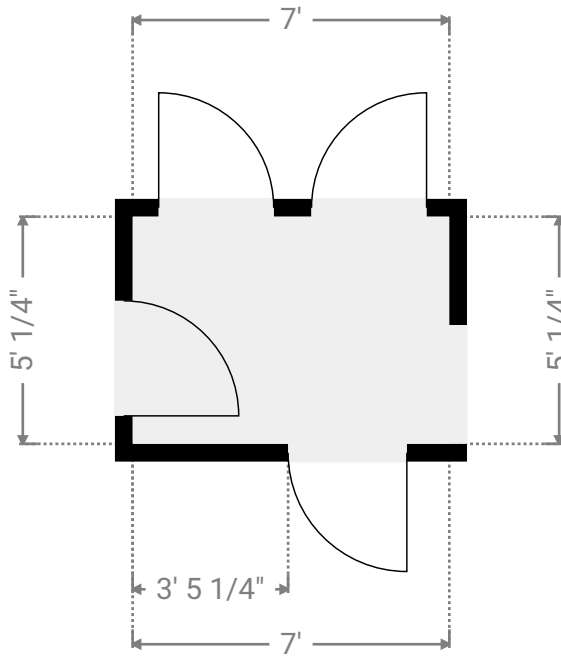
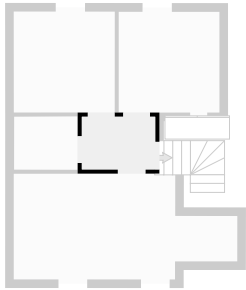
▼ **Bedroom**
2nd Floor

WIDTH: 21' 3 11/16" • LENGTH: 10' 1 1/16"
AREA: 180.41 sq ft • PERIMETER: 62' 8 11/16"



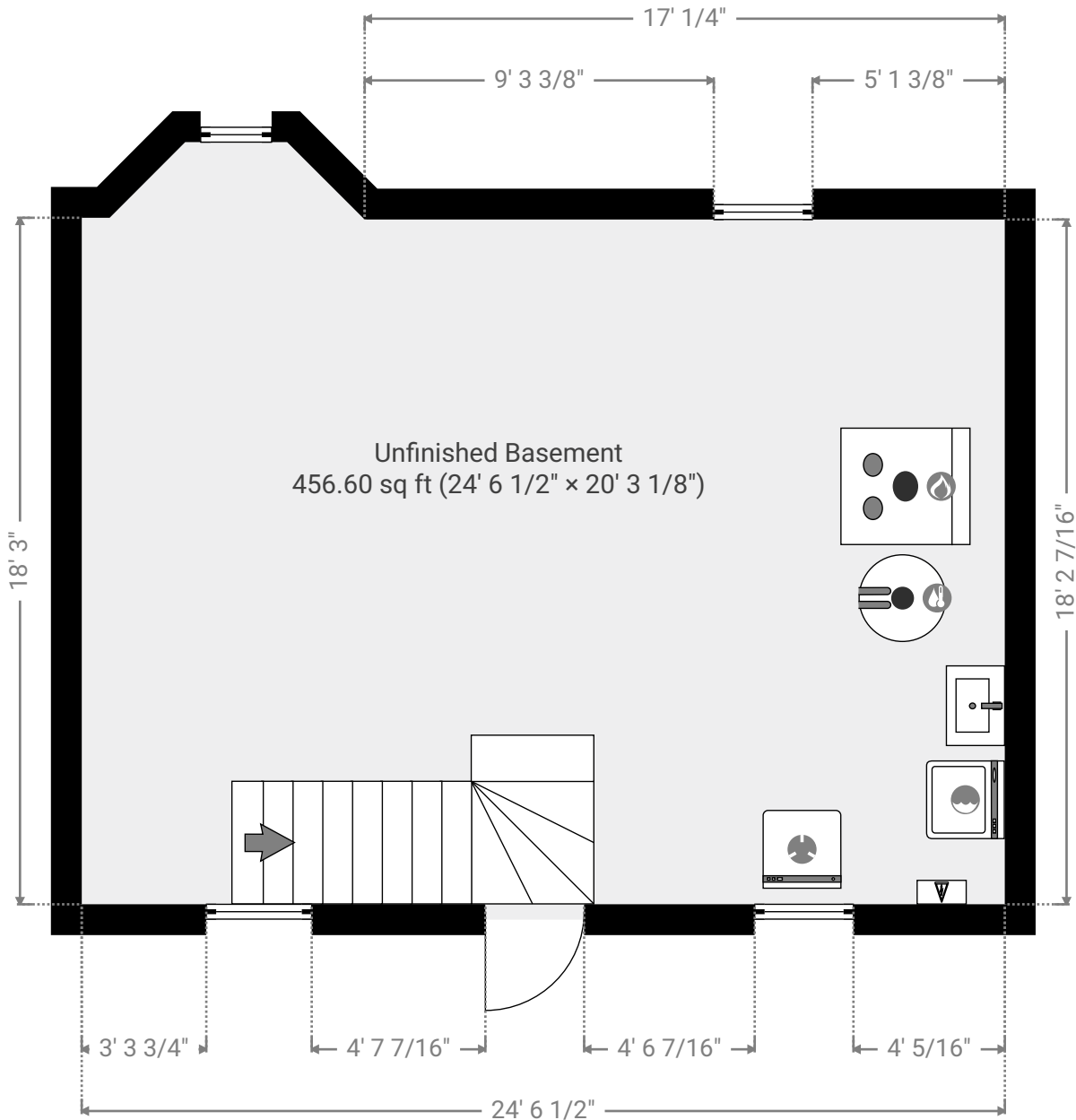
▼ Hallway
2nd Floor

WIDTH: 7' • LENGTH: 5' 1/4"
AREA: 35.15 sq ft • PERIMETER: 24' 1/2"



▼ Basement • Level 1

TOTAL AREA: 530.68 sq ft • LIVING AREA: 530.68 sq ft • ROOMS: 0



▼ **Unfinished Basement**
Basement • Level 1

WIDTH: 20' 3 1/8" • LENGTH: 24' 6 1/2"
AREA: 456.60 sq ft • PERIMETER: 87' 2 11/16"

